

# REM REWARDS



**REM Rewards™** is an incentive program that is exclusive to R.E. Michel customers. Registered participants earn “Michel Miles” whenever qualifying products are purchased at any R.E. Michel store location or online at [remichel.com](http://remichel.com).

Register online at [remichel.com](http://remichel.com) and begin earning Michel Miles today. It's that simple.

If you are new to [remichel.com](http://remichel.com), click on the web services button and follow the directions to register as a new web services customer. Once approved, enter your account number in the REM Rewards™ registration form and start earning Michel Miles.

We've made participation in the REM Rewards™ program easy and convenient for you...

- You can see your Michel Miles accumulate by going online at [remichel.com](http://remichel.com). Your Michel Miles are tallied for you – no need for you to keep track of invoices.
- This brochure shows only a few of the rewards available to you. Whether it's an HDTV or a Fossil watch, you will find REM Rewards™ offers a wide variety of rewards for a wide variety of tastes. Not sure exactly what you would like? Then select a gift card to Best Buy, Amazon, Macy's and more. The more you purchase, the greater the rewards.
- Redeem your Michel Miles on the website by selecting the reward(s) you want and clicking on the “Redeem” button. Acknowledgement of your REM Rewards™ selection(s) will be confirmed within 48 hours.

visit [remichel.com](http://remichel.com)  
for complete details  
and program rules.

**TABLE OF CONTENTS**

Outdoors ..... 01-08

Electronics..... 09-12

For Him ..... 13-15

For Her..... 16-18

For Kids..... 19-20

For Pets..... 21-22

For Home..... 23-28

For Everyone ..... 29-30

Gift Cards..... 31-32

**FOLLOW US**



Direct Access to REM Rewards™ Program



## THE RULES

Dealers must complete the online registration form.

Qualifying purchases from participating REM Rewards™ sponsors earn "Michel Miles".

Dealers earn Michel Miles from the beginning of the calendar quarter in which they register for the program. For example, if you register on August 15 your miles will accumulate from July 1.

Michel Miles are non-transferable and have no cash value. They cannot be carried forward to future REM Rewards™ promotions nor can Michel Miles be applied to any other incentive program offered by R.E. Michel Company.

Michel Miles cannot be redeemed for product/gift cards sold by R.E. Michel Company. Michel Miles cannot be purchased.

Dealer's account with the R.E. Michel Company must be "current and in good standing" at time of reward redemption. No Michel Miles will be allowed for accounts with past due balances.

All promotional funding is based on R.E. Michel Company standard corporate pricing. We reserve the right to adjust or withhold funding if pricing deviates from this.

Dealers registered for R.E. Michel Travel Incentive Program are not eligible for the REM Rewards™ program. If a customer moves from REM Rewards™ to the travel incentive program, REM Rewards™ points are forfeit and accrual rules of the travel program apply. If a customer transfers from the travel incentive program to REM Rewards™, they will earn points from the beginning of the quarter in which they transfer.

Make/model of some REM Rewards™ awards are subject to change based on availability and can change without notice. Michel Miles needed for reward redemption can change without notice.

When Michel Miles are redeemed for rewards and the product is returned in a subsequent month, the customer may have a negative balance in point totals. If this happens at the end of the year, the customer will begin the next year with a negative point balance.

Michel Miles expire on December 31. All reward requests must be received no later than January 15.

# OUTDOORS



## BLACKSTONE ON THE GO TABLETOP GRIDDLE SIZE 17"

The Blackstone On The Go 17" Tabletop Griddle with Orange Handle Hood is a compact, portable griddle designed for cooking on the go, featuring a classic hooded design that helps retain heat for efficient outdoor cooking.

- **Griddle size:** 17"
- **Surface:** 267 sq. in.
- **Capacity:** Up to 9 Hamburgers
- **Painted hood**
- **OTG Handle Grip**
- **Travel-friendly**

**ALSO AVAILABLE**  
BLACKSTONE LEGGERO  
PIZZA OVEN SIZE 13"



## CAMP CHEF 6PC CAST IRON COOKWARE SET

This all-in-one cast iron cookware set is a perfect introduction to cast iron cooking, offering long-lasting durability, excellent heat retention, and versatile performance. Designed for use at home, on the grill, or at the campsite, each piece delivers even heating for reliable results across a wide range of cooking styles.

- **Material:** Cast Iron
- **Care:** Hand Wash

**Included:** 4-qt legless Dutch oven, Dutch oven trivet, 10" skillet, 12" deep skillet, 12" lid (doubles as a skillet), 10" lid (fits Dutch oven and skillet)





## TRAEGER MEATER PLUS WIRELESS MEAT THERMOMETER

Experience grilling freedom with a wireless meat thermometer that lets you monitor your cook from a distance using the MEATER app, with guided temperature tracking and estimated cook times.

- **Wireless:** Up to 165 ft
- **Temperature:** °F / °C
- **Battery:** Up to 24hrs
- **Water Resistant**

## BLACKSTONE ON THE GO SCISSOR CART GRIDDLE

The Blackstone On The Go 22" Scissor Cart Griddle with Hood is designed for convenient outdoor cooking, featuring a collapsible cart and fast, even heating for meals anytime, anywhere.

- **Griddle:** 22 inches
- **Collapsible**
- **Output:** 24,000 BTUs
- **Hood included**
- **Burners:** 2 "H" burners

### ALSO AVAILABLE

BLACKSTONE ORIGINAL OMNIVORE GRIDDLE 28"

## CAMP CHEF BIG GAS GRILL THREE-BURNER PROPANE STOVE

Built for serious outdoor grilling, the Big Gas Grill delivers powerful, versatile performance with high heat output, durable construction, and portable design features for cooking anywhere.

- **Burners:** Three burners
- **Total heat output:** Up to 30,000 BTUs
- **Cooking surface:** Up to 608 sq. in.
- **Grill grate:** Pre-seasoned cast iron (grill box accessory)
- **Portability:** Removable legs and folding side shelf
- **Heat control:** Fully adjustable
- **Wind protection:** Bottom burner housing
- **Accessories included:** Regulator and 3 ft hose




**Included:**

x2 Hickory BBQ pellets - 20lb

**Shipping:**

Contiguous 48 U.S. states only; ships in multiple boxes

## TRAEGER IRONWOOD 885 SMART PELLET GRILL WITH HICKORY PELLETS

The Traeger Ironwood 885 Smart Pellet Grill/Smoker delivers precision temperature control and consistent wood-fired flavor with smart connectivity and advanced airflow design for superior smoking and grilling performance.

- **Cooking area:** 885 sq. in.
- **Main grate:** 30"W × 19"D
- **Second grate:** 30"W × 10.5"D
- **Technology:** WiFIRE® connectivity, D2® Direct Drive, Tru Convection®, Downdraft Exhaust, Super Smoke®
- **Pellet system:** Built-in pellet sensor
- **Dimensions:** 54"W × 27"D × 48"H



*Rewards subject to change without notice*

## TRAEGER TIMBERLINE XL WIFI PELLET GRILL

This advanced Traeger pellet grill delivers precise temperature control, smart connectivity, and versatile cooking performance with premium features designed for serious outdoor cooks.



## SOLO STOVE PI PIZZA OVEN ESSENTIAL BUNDLE WOOD ONLY

This high-performance pizza oven is optimized for even heat distribution and minimal heat loss, delivering consistent results whether using wood for authentic flavor or propane with an optional gas accessory. Its Demi-Dome construction and panoramic opening provide easy access and efficient airflow, while the durable stainless steel build ensures long-lasting outdoor use. A reversible cordierite pizza stone and infrared thermometer support precise, high-heat cooking for restaurant-quality pizzas at home.

- **Fuel:** Wood
- **Design:** Stainless steel body
- **Stone:** Reversible cordierite stone, 13mm thick
- **Temperature:** Infrared thermometer
- **Dimensions:** 20.5" × 15.125"



**Included:** Pi Pizza Oven, wood burning assembly, pizza stone, stainless peel, stainless turner, pizza cutter, thermometer, Pi Shelter cover.

**Shipping:** Contiguous 48 U.S. states only

**Cooking Area:** Up to 1,320 sq. in.

**Temperature Range:** 165°F–500°F

**Hopper Capacity:** 22 lb with pellet sensor

**Cooking Grates:** Stainless steel racks

**Technology:** Smart Combustion™, WiFIRE®, MEATER® compatibility, Super Smoke® mode

**Exhaust System:** Traeger Downdraft Exhaust

**Extras:** Induction side cooktop, EZ-Clean Grease & Ash Keg, P.A.L. Pop-And-Lock® rail

**Smart Home:** Alexa and Google Home

**Dimensions:** 71"W × 25"D × 51"H

**Shipping:** Contiguous 48 U.S. states only



**SOLO STOVE MESA XL SET**

+ BOX OF MINI WOOD

+ STARTER PACK ASH

This portable tabletop fire pit features dual-fuel capability and 360-degree airflow for efficient, low-smoke flames. Built from durable, lightweight stainless steel, it includes a folding stand for easy setup, storage, and transport.

- **Fuel Type:** Pellets or Mini Oak firewood
- **Heat Radius:** 2–3 ft
- **Construction:** 304 stainless steel
- **Stand:** Folding, stable surface

**Included**

Fire pit, Mini Oak firewood, starter pack, stand, nylon carry bag

**ALSO AVAILABLE**

SOLO STOVE YUKON 2.0  
BACKYARD BUNDLE



## YUKON OUTFITTERS 30 CAN TECH COOLER KINGS CAMO - DESERT SHADOW

This rugged, floating soft cooler is built for water-based adventures, providing secure transport, reliable ice retention, and waterproof protection—ideal for kayaking, boating, tubing, and ATV use.

**Ice retention:** 2–3 days (climate dependent)

**Insulation:** Closed-cell thermal insulation

**Inner Dimensions:** 13.5"W × 9"D × 9.5"H

**Overall Dimensions:** 15.5"W × 11.5"D × 13.5"H



## MAMMOTH TROPIC 30 BACKPACK COOLER

The Tropic 30 Backpack Cooler combines a durable nylon shell with premium insulation to keep items cold on hot days, while offering convenient storage in a comfortable backpack design.

**Capacity:** 30 quarts (24 cans)

**Construction:** Heavy-duty, puncture and tear-resistant nylon

**Insulation:** Premium insulation

**Storage:** Multiple accessory pockets



**ALSO AVAILABLE**  
MAMMOTH RANGER  
125 COOLER, ICE CHEST

## MAMMOTH RANGER 45 COOLER

The Ranger 45 is a rugged, rotomolded cooler built for extreme conditions, offering exceptional durability and long-lasting ice retention for demanding outdoor adventures.

**Capacity:** 45 quarts (11.25 gallons)

**Ice Retention:** 6–8+ days

**Construction:** Rotomolded

**Internal Dimensions:** 11.75"W × 17"L × 11.5"H

**External Dimensions:** 17"W × 23"L × 16.5"H



**ALSO AVAILABLE**

UGLY STIK ELITE LP BAITCAST  
COMBO 2PC 6FT X 6IN ROD

## ABU GARCIA VERITAS SPINNING COMBO 30 REEL SIZE 2PC 6FT X 6IN ROD

This balanced rod/reel combo is engineered for smooth performance and strength, combining advanced line management, durable components, and a lightweight design for reliable casting/control.

- **Bearings:** 10 stainless steel bearings + 1 roller bearing
- **Rod:** 2-piece, 6'6" medium, fast action w/ split handle
- **Guides:** 8 titanium alloy guides w/ ROCS guide train
- **Reel Size:** 30, front drag, 6.2:1 gear ratio
- **Max Drag:** 14 lb
- **Spool:** Machined aluminum, braid ready
- **Line Rating:** 6–12 lb

**ALSO AVAILABLE**

GOPRO MAX 360 ACTION CAMERA

## TUMI SPORT GOLF DUFFEL BLACK

This golf duffel is designed to organize and carry all your essentials with ease, combining smart storage, versatile carry options, and durable construction for travel to and from the course.

- **Material:** Ballistic nylon
- **Storage:** Main compartment with multiple interior and exterior pockets + water-resistant shoe pocket
- **Carry options:** Shoulder strap + Tuck-away Straps
- **Travel features:** Add-A-Bag sleeve and TUMI Tracer®
- **Dimensions:** 11.3" × 20.5" × 9.5"

## JBL BOOMBOX 3 PORTABLE BLUETOOTH SPEAKER SQUAD CAMO

This powerful JBL portable speaker delivers immersive, high-quality sound with deep bass, long battery life, and rugged waterproof protection, making it ideal for all-day listening anywhere.

- **Sound:** JBL Original Pro Sound
- **Battery life:** Up to 24 hours
- **Durability:** IP67 dustproof and waterproof
- **Connectivity:** Bluetooth
- **Battery:** 10,000mAh Rechargeable

## TOUR V6 SHIFT LASER RANGEFINDER PATRIOT

This tour-trusted Bushnell rangefinder delivers fast, precise distance readings with advanced slope compensation and visual confirmation, making it a top choice for serious golfers.

- **Technology:** Patented Slope with Slope Switch; PinSeeker with Visual Jolt
- **Accuracy & Optics:** Accurate to within inches; 6× magnification with 24mm lens
- **Durability & Mounting:** IPX6 weather resistant; integrated BITE magnetic cart mount

### App & Extras:

Bushnell Golf app compatible

### Included:

Carrying case, Microfiber Cloth, Battery



## GARMIN APPROACH R10 PORTABLE GOLF LAUNCH MONITOR

This portable golf launch monitor helps you improve your game year-round, offering detailed swing and ball data with app-based analysis and virtual course play both indoors and outdoors.

### Included:

Tripod, phone mount, case, microUSB cable

- **Tracking Metrics:** Head speed, ball speed, spin, launch angle, direction, smash factor
- **App & Software:** Garmin Golf app; virtual play on 42,000+ courses; compatible with E6 Connect (not included) and Awesome Golf (subscription required)
- **Battery:** Up to 10 hours;
- **Durability:** IPX7 waterproof

# ELECTRONICS

## APPLE - 11-INCH IPAD AIR M3 CHIP BUILT APPLE INTELLIGENCE WI-FI 128GB

The 11-inch iPad Air is powered by the Apple M3 chip and built for Apple Intelligence, delivering fast performance, a stunning Liquid Retina display, and advanced connectivity for work, creativity, and everyday use.

- **Display:** 11" Liquid Retina display
- **Processor:** Apple M3 chip
- **Camera:** 12MP Center Stage front camera
- **Connectivity:** Wi-Fi 6E
- **Compatibility:** Apple Pencil Pro, Magic Keyboard, Smart Folio

### ALSO AVAILABLE

APPLE - 11-INCH IPAD A16 CHIP  
W/WI-FI - 128GB



## APPLE - WATCH SERIES 10 (GPS) 42MM ALUMINUM

Apple Watch Series 10 features a larger display in a thinner, lighter design, delivering advanced health insights and fitness tracking with faster charging for everyday convenience.

- **Band:** Black Sport S/M Jet Black
- **Design:** 42MM Aluminum Case
- **Health Features:** Sleep Apnea Notifications and advanced health tracking
- **Charging:** Faster charging capability



## APPLE - AIRPODS 4

AirPods 4 with Active Noise Cancellation deliver a transformed listening experience with Adaptive Audio, Transparency mode, and an updated fit designed for all-day comfort.

- **Noise Control:** Active Noise Cancellation, Adaptive Audio, Transparency mode
- **Fit:** Redesigned for all-day comfort
- **Color:** White



### ALSO AVAILABLE

APPLE - AIRPODS PRO (2ND GENERATION) (USB C) - WHITE

## MICROSOFT SURFACE LAPTOP GO 3

The Surface Laptop Go 3 combines a sleek, modern design with ultra-portable performance, weighing under 2.5 pounds and featuring a vibrant 12.4" touchscreen ideal for productivity and entertainment on the go.

**Display:** 12.4" touchscreen

**Storage:** 256GB SSD

**Processor:** Intel Core i5

**Weight:** Under 2.5 lbs

**Memory:** 8GB RAM

**Color:** Platinum





**ALSO AVAILABLE**  
BOSE PORTABLE SMART  
SPEAKER

## BOSE - QUIETCOMFORT WIRELESS HEADPHONES

Bose QuietComfort headphones deliver immersive, high-fidelity sound with advanced noise cancelling you can control. Switch between Quiet and Aware Modes, or create a custom listening experience with adjustable noise cancellation and Wind Block, all tuned through the Bose app for all-day comfort and performance.

- **Noise Control:** Active Noise Cancelling w/ Quiet, Aware, and Custom Modes
- **Sound Customization:** Adjustable EQ via Bose app
- **Connectivity:** Bluetooth wireless
- **Microphone:** Built-in mic for calls
- **Design:** Over-the-ear, lightweight, all-day comfort
- **Color:** Black



**ALSO AVAILABLE**  
SAMSUNG - 55" CLASS Q60D  
SERIES QLED 4K SMART TIZEN TV

## TCL - 55" CLASS S5 S-CLASS 4K UHD HDR LED SMART TV WITH GOOGLE

The TCL S5 S-Class Smart TV delivers stunning 4K HDR picture quality with enhanced brightness, vibrant color, and smooth motion. Its FullView 360 metal bezel-less design pairs with advanced processing to create an immersive, cinematic viewing experience for movies, shows, and sports.

- **Screen Size:** 55" class
- **Resolution:** 4K UHD (3840 × 2160)
- **Display:** LED with High Brightness backlight
- **Processor:** TCL AIPQ Processor w/scene optimization
- **HDR Formats:** Dolby Vision, HDR10+, HDR10, HLG
- **Motion:** Motion Rate 240 w/MEMC frame insertion
- **Smart Platform:** Google TV
- **Design:** 360 edge-to-edge bezel-less



## 75" CLASS Q6F SERIES QLED 4K UHD SAMSUNG AI SMART TIZEN TV

This Samsung Q6F Series QLED TV delivers stunning 4K clarity with intelligent upscaling, enhanced color, and deep contrast, revealing rich detail in both bright and dark scenes for an immersive viewing experience.

- **Screen Size:** 75" class
- **Resolution:** 4K UHD (3840 × 2160)
- **Display Technology:** QLED
- **Processor:** Q4 Lite processor w/4K upscaling
- **HDR:** HDR10+ support
- **Refresh Rate:** 60Hz w/Motion Xcelerator
- **Smart Platform:** Samsung Vision AI w/Tizen OS
- **Connectivity:** Wi-Fi, Bluetooth, Ethernet
- **Ports:** 3 × HDMI, USB
- **Voice Assistants:** Built-in Bixby, Alexa/Google
- **Audio:** 20W 2-channel speaker system
- **Model Year:** 2025

# FOR HIM

## DEWALT 60V BRUSHLESS 12" DOUBLE BEVEL SLIDING MITER SAW

Professional-grade 60V brushless miter saw delivering powerful, precise cuts with extended runtime and effective dust control.

- **Power:** 60V MAX w/Regenerative Braking
- **Blade:** 12" diameter, 3800 RPM
- **Cutting Capacity:** Up to 12.1875"W x 6.5"D
- **Bevel:** Dual bevel up to 49°
- **Dust Capture:** Up to 94% efficient
- **Weight:** ~50.9 lb (tool only)

### Included (kit):

FLEXVOLT battery, 6 Amp charger, blade, blade wrench, material clamp, stabilizer bar, vacuum adapter, dust bag, 2 base extensions

## DEWALT 60V MAX 21" SINGLE-STAGE SNOW BLOWER KIT

This powerful 60V cordless snow blower delivers efficient, reliable snow removal with user-friendly controls, strong throwing performance, and easy storage, making it ideal for clearing driveways and parking areas in winter conditions.

- **Power:** 60V cordless
- **Clearing Width:** 21"
- **Ideal Snow Depth:** 6"
- **Auger:** 7"
- **Throwing:** Up to 40 ft
- **Rotation:** 190°
- **Modes:** Max/Eco
- **Tires:** 9"
- **Visibility:** Dual LED
- **Storage:** Quick-fold

### Included:

(2) FLEXVOLT 12.0Ah batteries, (2) 12V MAX / 20V MAX 4.0Ah chargers, discharge chute assembly

### ALSO AVAILABLE

MILWAUKEE M18 FUEL 17" DUAL BATTERY STRING TRIMMER KIT



## LITTLE GIANT EPIC MODEL 26 ALUMINUM TYPE 1A LADDER

Epic ladders are the ultimate multi-position solution, converting easily to meet a wide range of jobsite and home needs while providing enhanced stability and safety.

- **Configurations:** Stepladder, extension ladder, 90° ladder, staircase ladder, scaffolding
- **Safety Features:** Vertical walk-through safety rails
- **Leveling:** Ratchet leg levelers for uneven ground
- **Max Reach:** 16 ft
- **Extension Reach:** 25 ft 10 in

## BRIGGS STRATTON 3200 PSI 4.5 GPM GAS PRESSURE WASHER

This gas pressure washer delivers versatile, powerful cleaning with dual-mode performance, reliable engine protection, and easy mobility, making it ideal for tackling a wide range of outdoor cleaning tasks.

- **Engine:** CR950 Series, 208cc, 9.5 ft-lbs gross torque
- **Cleaning Modes:** PowerFlow+ dual mode (High Pressure / High Flow)
- **Pump:** Maintenance-free axial w/Easy Start
- **Nozzle:** 7-in-1 twist nozzle
- **Hose:** 30 ft high-pressure hose
- **Mobility:** 10" wheels, fold-down handle
- **Dimensions:** 26"L × 18.5"W × 39.75"H



# FOR HIM

## GARMIN EPIX PRO (GEN 2) 51MM SMARTWATCH SAPPHIRE ED CARBON GRAY W/ BLACK BAND

The Garmin ePIX Pro (Gen 2) is a premium multisport smartwatch built for performance and endurance, featuring a brilliant AMOLED display, advanced training metrics, and rugged materials designed for demanding outdoor and athletic use.

- **Display:** 1.4" Sapphire AMOLED
- **Battery Life:** Up to 31 days in smartwatch mode
- **Case & Materials:** 51 mm case, sapphire crystal lens, carbon gray DLC titanium bezel
- **Fitness & Training:** Hill Score, Endurance Score, race predictor, pace and performance metrics
- **Navigation & Health:** Multi-band GPS, activity tracking, health monitoring
- **Features:** Built-in LED flashlight with red safety light, Power Manager, smart notifications
- **Water Resistance:** 100 meters
- **Band:** Black silicone strap (fits 127–210mm wrists)



## GARMIN MARQ AVIATOR (GEN 2) MODERN TOOL WATCH TITANIUM

This premium aviation-focused smartwatch is built for pilots and global travelers, combining advanced nav, weather intelligence, and safety features with rugged titanium construction and long battery life.

- **Battery Life:** Up to 16 days with gesture mode
- **Aviation Features:** Direct-to Nav, worldwide aeronautical database, METAR/TAF/MOS weather, Meteogram, airport info, flight log emergency mode
- **Navigation & Sensors:** Multicontinent topo maps, multi-band GNSS with SatIQ™, ABC sensors
- **Safety & Time:** Incident Detection, UTC and time zones, Jet Lag Adviser
- **Build:** Domed sapphire crystal lens, Grade 5 titanium bezel and case, titanium bracelet
- **Case Size:** 46 × 15 mm
- **Fit:** Wrist sizes 135–213 mm





# FOR HER

## MICHAEL KORS LADIES MINI RUNWAY ROSE GOLD-TONE SS WATCH

The Michael Kors Mini Runway is a sleek, glamorous everyday watch with an all rose gold-tone finish, clean dial design, and a classic bracelet style that works dressed up or casual.

**Band:** Rose gold-tone stainless steel

**Dial:** Rose gold-tone (crystal cover)

**Case Size:** 33mm

**Water Resistance:** 50 meters

## DYSON CORRALE HAIR STRAIGHTENER & DRYER

This premium Dyson hair styling set pairs the cordless Corrale straightener with the powerful Supersonic hair dryer, delivering precise heat control, versatile styling options, and salon-quality results while helping protect hair from excessive heat damage.

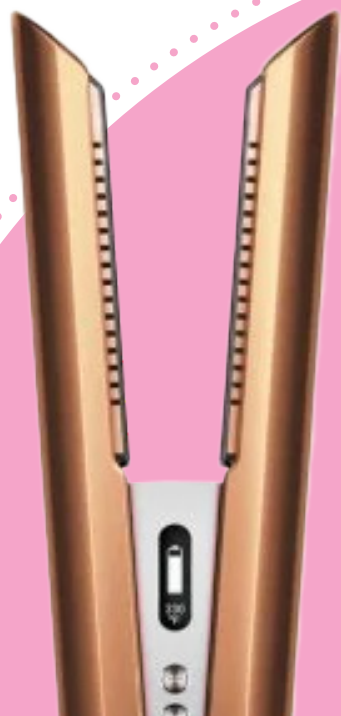
- **Corrale Straightener:** Flexing alloy plates, 3 heat settings, corded/cordless, up to 30 min runtime, ~70 min full charge, auto shutoff
- **Supersonic Hair Dryer:** Intelligent heat control, 3 speeds, 4 heat settings, fast airflow

### Hair Straightener - Included:

Charging dock and cable, travel pouch

### Hair Dryer - Included:

Diffuser, styling concentrator, gentle air attachment, wide tooth comb, flyaway attachment



### ALSO AVAILABLE

CAMELBAKWOMENS TRAIL RUN VEST W/ TWO  
17OZ QUICK STOW FLASTS BLACK

# FOR HER

## MICHAEL KORS LADIES MINI EMPIRE SILVER TONY STAINLESS STEEL WATCH

An elegant iteration of the Empire timepiece. Pays homage to big city glamour with a minimal Art-Deco design. Silver-tone stainless steel bracelet bezel and case. Silver MK logo stamped rectangle dial with three hands. Quartz movement. Fastening clasp closure. Case size: 30mm. Water resistant to 50 M.

- **Band:** Stainless steel silver-tone bracelet
- **Dial:** Silver-tone with logo-faceted design
- **Case Size:** 30mm rectangular stainless steel case
- **Movement:** Quartz 3-hand movement
- **Clasp:** Adjustable fold-over clasp
- **Crystal:** Scratch-resistant mineral crystal
- **Water Resistance:** 50 meters / 5 ATM
- **Style/Function:** Hour, minute, and second hands; luxury fashion watch



## CITIZEN WOMENS TWO TONE STAINLESS STEEL WATCH - CRYSTAL BEZEL

- **Band Material:** Two-tone stainless steel
- **Case Material:** Stainless steel
- **Dial:** Mother-of-pearl/white pearl dial
- **Bezel:** Fixed crystal-accent bezel
- **Crystal (glass):** Scratch-resistant mineral crystal
- **Water Resistance:** 50 meters (165 ft)



Rewards subject to change without notice

## COACH QUILTED C ACCENT CRYSTAL TAG PENDANT NECKLACE

A stylish Coach pendant necklace featuring a signature quilted "C" tag adorned with crystal accents and a delicate tea rose charm, finished with a secure lobster clasp and an adjustable chain for everyday elegance.

- **Pendant:** Quilted "C" tag with crystal accents
- **Chain:** Gold-tone chain with lobster clasp closure
- **Length:** Approx. 16" + 2" extender
- **Drop:** Approx. 1.25" pendant drop
- **Material:** Polished metal with crystal embellishments
- **Packaging:** Coach gift packaging included



## COACH QUILTED C CRYSTALS BANGLE

This Coach hinged bangle adds a polished, elevated touch to any look with quilted "C" detailing and crystal accents. It's an easy statement piece you can wear solo or stack.

- **Design:** Gold-tone hinged bangle
- **Accents:** Golden shadow crystal
- **Size:** 2.4" diameter



# FOR KIDS



## SUPERSONIC 7" TABLET W/ ANDROID & BLUETOOTH

This kid-friendly 7" tablet is great for browsing, watching videos, reading books, and playing games. It includes cameras, Bluetooth support, and built-in safety features through Google Kids Space for a more secure and fun experience.

- **Display:** 7" touchscreen, 1024 × 600
- **OS:** Android 15 w/Google Kids Space
- **Cameras:** Front/Rear cameras
- **Bluetooth:** Bluetooth 4.2
- **Battery Life:** Up to 3–4hrs
- **Storage:** MicroSD (up to 32GB)



## ALILO D3C EARLY EDUCATION READING PEN SET

The Alilo D3C Reading Pen Set helps young children learn independently through interactive audio play. Kids can tap the pen on flashcards and storybooks to hear words, sounds, music, stories, making early learning fun, engaging, and easy to explore at their own pace.

- **Age:** Recommended ages 3–6
- **Learning Content:** Flashcards
- **Card Sets:** Alphabet & musical instrument cards
- **Audio:** Nursery rhymes, stories, lullabies
- **Books:** 3 interactive storybooks

**ALSO AVAILABLE**  
ULTIMATE YOUTH PICKLEBALL SET

## FISHER PRICE LAUGH & LEARN ULTIMATE PLAY- HOUSE AGES 6+

Interactive crawl-through playhouse activity center with Smart Stages learning, a 4-button radio, porch light, and drop-through rain spout, plus 200+ songs, sounds, and phrases that teach letters, numbers, counting, colors, and shapes.

- Type:** Electronic playhouse + crawl-around activity center  
**Age Range:** 6 months–3 years  
**Learning Content:** 200+ songs, sounds, and phrases  
**Learning Levels:** 3 Smart Stages levels  
**Teaches:** Alphabet, numbers & counting, colors, shapes.

**ALSO AVAILABLE**  
CLASSIC 2FTX3FT WOOD CORNHOLE  
SET W/8 BAGS & SCOREBOARD



## KOOL KARZ 24V 2-SEAT RIDE-ON LAMBORGHINI TOY CAR AVENTADOR

This 2-seat Lamborghini Aventador ride-on car delivers a realistic driving experience w/music, lights, and smooth handling. Built for safe outdoor fun, it includes comfort features, driving modes, and parental remote control for added confidence.

- **Power:** 24V battery with dual motor
- **Seating:** 2-seats w/leather seat & 5-point seatbelt
- **Controls:** High/low speed settings, forward/reverse, foot driving mode, 2.4GHz parental remote
- **Features:** LED headlights, working doors, horn, dashboard with power display
- **Audio:** AUX/MP3 input, Micro SD slot, USB port
- **Comfort:** Dual shock absorbers



## KIDFIT ADAPT PLUS 2-IN-1 POSITIONING BOOSTER CAR SEAT

This convertible booster seat is built for comfort and confidence on every ride, with advanced head and torso protection, secure LATCH installation, and plush padding. It easily adjusts as your child grows and can convert from a high-back booster to a backless booster for long-term use.

- **Modes:** Backrest & converts to backless booster
- **Fabric:** ClearTex fabric (no added chemicals)
- **Extras:** CupFolders + bonus kid console
- **Fit:** Ages 4+; 38–57" tall
- **Weight:** High-back 30–100lb; Backless 40–110 lb

## GREYCASTLE ESTATES CAT TOWER

The Greycastle Estates cat tower is a tall, multi-level play and lounge space designed for climbing, scratching, and relaxing. It features multiple hideaways, cushioned beds, and built-in play elements, making it a strong option for active cats or multi-cat homes.

- **Height:** 72" (6 ft)
- **Overall Size:** 22.5"L × 23.5"W × 72"H
- **Base Size:** 19.25"L × 19.25"W
- **Features:** Dual-entry hideaway, extra-large lower hideaway, 2 cushioned day beds, jute-wrapped scratching posts, pass-through lounging platform, hanging plush toy.
- **Materials:** Particle board, jute, fabric, elastic

ALSO AVAILABLE  
PETSAFE DRINKWELL PET FOUNTAIN

## PETSAFE SCOOPFREE CLUMPING SELF CLEANING LITTER BOX

This self-cleaning litter box eliminates daily scooping by automatically managing waste for weeks at a time. It uses crystal litter for strong odor control and low tracking, with disposable trays for quick, mess-free cleanup and built-in sensors to track usage.

- **Cleaning:** Self-cleaning system
- **Litter Type:** Crystal Litter
- **Dust/Tracking:** Low-tracking, 99% dust-free
- **Tray System:** Disposable tray
- **Monitoring:** Health + motion sensors



## HOME ON-THE-GO SINGLE DOOR DOG CRATE - SM, M, L, XL

This portable dog crate is built for secure, comfortable containment at home or on the go. It features heavy-gauge mesh for strength, a reinforced single front door with dual locks, and a deep plastic pan to help contain messes. The crate assembles quickly without tools and folds flat for easy storage.

**Small:** Up to 30 lbs / 20" height

**Medium:** Up to 60 lbs / 25" height

**Large:** Up to 70 lbs / 30" height

**X-Large:** Up to 85 lbs / 30" height

- **Construction:** Heavy-gauge mesh
- **Door:** Large door + 2 security locks
- **Pan:** Extra-deep 1.5"
- **Portability:** Tool-free assembly
- **Wire Spacing:** 1.25"



## CANYON PUFFER PUP SACK 40" PET SLEEPING BAG INK/GREEN

The Canyon Puffer Pup Sack gives your dog a cozy, burrow-style sleeping bag that also works as a padded dog bed for camping, travel, and outdoor adventures. Built with durable, water-resistant materials and insulated for warmth, it packs down easily for convenient transport.

**Size:** 40" Sleeping bag

**Design:** Burrowing or use as a dog pad

**Shell:** Durable nylon w/PFC-free water-resistant finish

**Insulation:** Thermal foil lining + 300g recycled polyfill

**Outdoor Features:** 4 built-in stake loops

**Storage:** Ventilated mesh stuff sack included

**Packed Size:** 33.5"H x 10.25"W

**Color:** Ink/Green



# FOR HOME

## NINJA FOODI 8.5QT POSSIBLECOOKER PRO MULTI-COOKER

The Foodi PossibleCooker Pro is a powerful, all-in-one kitchen solution designed to cook for a crowd. With versatile cooking modes and fast Triple Fusion Heat technology, it replaces multiple appliances while allowing you to sear, cook, and finish meals all in one pot.

- **Capacity:** 8.5 quarts
- **Cooking Functions:** 8-in-1
- **Technology:** Triple Fusion Heat
- **Power:** 1200 watts
- **Dimensions:** 18"L × 12.64"W × 10.59"H



### Included:

Cooker base and pot, detachable spoon-ladle, glass lid, recipe guide

### ALSO AVAILABLE

JURA ENA 4 AUTOMATIC COFFEE MACHINE NORDIC WHITE



## JURA Z10 AUTOMATIC COFFEE MACHINE

This fully automatic espresso machine delivers barista-quality coffee with intelligent grinding, precise brewing technology, and smart connectivity, offering a wide variety of specialty drinks with consistent flavor and temperature.

- **Coffee Options:** Up to 32 specialty beverages
- **Brewing Tech:** Product Recognizing Grinder, Aroma Selection, Cold Extraction Process, 3D Brewing, intelligent preheating
- **Customization:** Programmable size and strength

- **Monitoring & Controls:** Active bean monitoring, JURA Cockpit with cleaning/descaling/filter status
- **Connectivity:** Wifi-enabled
- **Capacity:** 81 oz water tank; 10 oz bean container
- **Dimensions:** 12.6"W × 15"H × 17.7"D

## LE CREUSET 3.5 QT SIGNATURE CAST IRON ROUND DUTCH OVEN

This premium enameled cast iron Dutch oven is America's Test Kitchen-recommended for its exceptional heat retention, durability, and versatility, delivering consistent results for everything from slow braises to baking.

- **Construction:** Cast iron w/shock-resistant exterior
- **Interior:** Enamel coating resists sticking/stains
- **Oven Safety:** Pot safe up to 500°F
- **Compatibility:** All stovetops, grills, and oven
- **Cleaning:** Dishwasher safe



### ALSO AVAILABLE

LE CREUSET **5PC** SIGNATURE CAST IRON  
COOKWARE SET - WHITE

LE CREUSET **7PC** SIGNATURE CAST IRON  
COOKWARE SET - CERISE

LE CREUSET **11PC** SIGNATURE CAST IRON  
ULTIMATE COOKWARE SET - OYSTER



## JURA E8 AUTOMATIC COFFEE MACHINE BLACK

This fully automatic espresso machine delivers rich, café-quality coffee with advanced grinding and extraction technology, intuitive controls, and easy maintenance in a sleek, modern design.

- **Coffee Options:** Up to 17 specialty drinks
- **Grinder & Brewing:** Professional Aroma Grinder; Pulse Extraction Process
- **Controls:** 2.8" color display w/operation
- **Customization:** 10 programmable coffee strength levels; intelligent preference recognition

- **Milk System:** One-touch milk system cleaning
- **Pump Pressure:** 15 bar
- **Capacity:** 63.6 oz water tank
- **Power:** 120V, 10A, 1450W
- **Dimensions:** 11"W × 13.8"H × 17.6"D



## CARAWAY 14PC KNIFE & UTENSIL SET GRAY

This thoughtfully designed knife and utensil set combines premium materials with smart storage, delivering durable performance and an organized, modern kitchen setup using responsibly sourced components.

### Included:

Storage tray  
Knife block  
Utensil bucket  
Utensil block

Chef's knife  
Prep knife  
Bread knife  
Paring knife  
Kitchen shears

Wooden:  
spoon, server  
scraper, spatula  
tongs

### Included:

10.5" fry pan, 3 qt saucepan with lid, 4.5 qt sauté pan with lid, 6.5 qt Dutch oven with lid, Storage caddy, Canvas lid holder

## CARAWAY NON-TOXIC NONSTICK CERAMIC COOKWARE SET

This premium nonstick cookware set delivers even heating, easy cleanup, and a clean, toxin-free coating, all in a stylish design that works across all stovetops and in the oven.



## WUSTHOF 3PC CLASSIC CHEF'S SET

Wüsthof Classic knives are precision-forged from a single piece of high-carbon stainless steel, delivering exceptional sharpness, balance, and durability trusted by both professional and home cooks.

### Included:

3.5" paring knife, 6" utility knife 8" cook's knife

**ALSO AVAILABLE:** WUSTHOF GOURMET  
18PC KNIFE BLOCK SET

**ALSO AVAILABLE:** JA HENCKELS INTL.  
GRAPHITE 20PC KNIFE BLOCK SET

## CARAWAY 11PC NON-TOXIC NONSTICK CERAMIC MEGA BAKEWARE SET

This durable nonstick bakeware set delivers even heating, easy release, and simple cleanup, with a toxin-free coating and smart storage.

### Included:

18" × 13" baking sheet, 15" × 10" baking sheet  
12-cup muffin pan, 9" × 13" rectangular pan  
18" × 13" cooling rack, 9" square pan  
1 lb loaf pan, (2) 9" round pans, (2) storage caddies





## RING ALARM PRO 8 PIECE HOME SECURITY KIT

The Ring Alarm Pro combines whole-home security with built-in Wi-Fi 6 networking, delivering reliable protection for your home and the internet it runs on. With easy DIY setup and smart monitoring through the Ring app, it helps you stay connected, secure, and in control.

- **Security Coverage:** Protects doors, windows, and indoor spaces with contact and motion sensors
- **Wi-Fi:** Built-in eero Wi-Fi 6 router with coverage up to approximately 1,500 sq. ft.
- **Power Backup:** Base station includes a rechargeable backup battery (up to 24 hours)
- **Smart Home:** Works with Amazon Alexa
- **Installation:** No professional installation required



## SWANN 8 CAMERA 16 CHANNEL 4K ULTRA HD PRO PROFESSIONAL NVR SECURITY SYSTEM

This advanced wired security system delivers ultra-clear 4K video with intelligent detection, color night vision, and active deterrence features. Designed for reliable, long-term monitoring, it combines powerful analytics, large local storage, and smart app control for comprehensive home or business security.

- **Video:** 4K Ultra HD w/color night vision up to 130 ft
- **Detection:** Heat and motion sensing w/smart analytics
- **Features:** Two-way audio, flashing red/blue spotlights, weatherproof cameras
- **Storage:** 2TB HD w/up to 6M of recording
- **Connectivity:** HDMI/VGA output, USB ports

## DYSON BALL ANIMAL 2 TOTAL CLEAN UPRIGHT VACUUM, BLUE

This powerful Dyson vacuum delivers advanced suction and maneuverability with intelligent height adjustment, hygienic emptying, and specialized tools designed for whole-home, allergy-friendly cleaning.

- **Technology:** Self-adjusting cleaner head, Radial Root Cyclone™, Ball™ technology
- **Filtration:** Washable lifetime filter; Asthma & Allergy Foundation of America certified
- **Design:** High-reach wand with instant release; one-click hygienic bin emptying

**Included:**

Combination tool, Stair tool, Tangle-free turbine tool  
Reach-under tool, Carbon fiber soft dusting brush  
Multi-angle brush, Mattress tool, Articulating hard  
floor tool, Tool bag.



# EVERYONE

## SAMSONITE CARBON ELITE 2.0 2PC HARDSIDE SPINNER SET - DARK GRAY

Carbon Elite luggage is built for durability and smooth travel, featuring rugged hardside construction, maneuverability, and secure storage to keep belongings protected on every trip.

- **Construction:** Polycarbonate hardside
- **Mobility:** 360° spinner wheels
- **Security:** Keyless TSA-approved lock
- **Handle:** Adjustable telescopic handle

### Included:

20" Spinner: 19.75"H × 13.75"W × 9.125"D

27" Spinner: 27"H × 19.5"W × 13.25"D

### ALSO AVAILABLE

SAMSONITE OPTO 3 3PC HARDSIDE SPINNER SET ARCTIC SILVER



## SUNNY HEALTH & FITNESS ASTRA ELITE SMART INCLINE TREADMILL

This smart treadmill delivers a quiet, smooth workout experience with a powerful brushless motor, automatic incline, and app connectivity. Designed for comfort and performance, it offers customizable programs, shock absorption, and easy tracking for effective home training.

- **Performance:** Brushless motor; 3/6 MPH
- **Incline:** 15 levels (0.66–6.69°) w/auto incline
- **Programs:** 3 user profiles; 24 customizable programs; SunnyFit app support
- **Console:** Tracks time, distance, calories, speed, steps; pulse sensors for heart rate
- **Capacity:** 300 lb max user weight;
- **Dimensions:** 67.9"L × 33.9"W × 56.5"H; Folded 40.6"L × 33.9"W × 60.2"H;
- **Running Surface:** 55"L × 20"W



## HAPPY EBIKES HAPPY CAMPER II STEP-THRU ELECTRIC BIKE - BLACK

This high-performance electric fat tire bike delivers powerful acceleration, long-range capability, and smooth control for both on-road and off-road riding. Built with quality components and advanced pedal assist, it offers a reliable and comfortable e-bike experience.

- **Motor & Power:** Bafang 750W 48V brushless
- **Battery:** 48V 15.6Ah Samsung lithium-ion
- **Range & Speed:** 25–45+ miles; 19–25 MPH max
- **Tires:** 26" × 3" puncture-resistant fat tires
- **Drivetrain:** 7-speed Shimano w/5 levels of pedal assist; half-twist throttle
- **Suspension:** RST hydraulic suspension fork
- **Brakes:** Tektro disc brakes
- **Display & Lights:** Color USB display; front LED light and rear brake taillight
- **Capacity:** 275 lb payload capacity

## JBL PARTYBOX ULTIMATE MASSIVE PARTY SPEAKER

This powerful JBL party speaker delivers room-filling sound with deep bass, dynamic lighting effects, and easy portability. Designed for parties and live performances, it combines immersive audio, music-synced light shows, and versatile input options for an all-in-one entertainment experience.

- **Sound:** JBL Pro Sound dual tweeters & subwoofers
- **Lighting:** Music-synced light show
- **Durability:** IPX4 splashproof
- **Connectivity:** Dual mic/guitar inputs, 3.5mm input
- **Design:** Built-in handle/wheels for portability
- **Dimensions:** 17.91" × 41.3" × 17.32"



# GIFT CARDS

---



## AVAILABLE:

Airbnb  
Amazon.com  
AMC Theatres  
Apple  
Bass Pro  
Bath & Body Works  
Best Buy  
Bloomin Brands  
Buffalo Wild Wings  
Cabela's  
CVS  
Darden Restaurants  
Dick's Sporting Goods  
Disney  
Domino's  
DoorDash  
Dunkin Donuts  
Famous Footwear  
Grubhub  
Guitar Center  
Home Depot  
Hotels.com  
Kohl's  
Krispy Kreme  
Lands' End  
Lowe's

Macy's  
Nike  
Petco  
PetSmart  
Pottery Barn  
REI  
Saks Fifth Avenue  
Sephora  
Southwest  
Stitch Fix  
Sur La Table  
Target  
Top Golf  
Uber  
ULTA Beauty  
Under Armour  
Wayfair  
Williams-Sonoma

**VISIT REMICHEL.COM TO  
SEE THE WIDE VARIETY OF  
CHOICES AVAILABLE!**

**FOLLOW US ON:**

